



COMMERCIAL DIVING &
MARINE SERVICES

CAPABILITY STATEMENT

About Smart Subsea

Located in Perth, Western Australia, Smart Subsea is a family-owned Commercial Diving and Marine Services provider. We take great pride in providing tailored solutions for our clients and we strive to complete all projects on time and on budget.

We achieve this by using well maintained equipment, competent personnel, and most importantly, we plan all works in detail to ensure safety, quality and the environment never take second place.

Locations

Head Office and Workshop

7 & 8 / 77 Christable Way
Landsdale 6065
Western Australia

info@smartsubsea.com.au
08 9302 1484



The head office and base of operations, with 420m² workshops and 200m² hard stand. The workshops are where we service and maintain our equipment, along with custom fabrication and equipment storage.

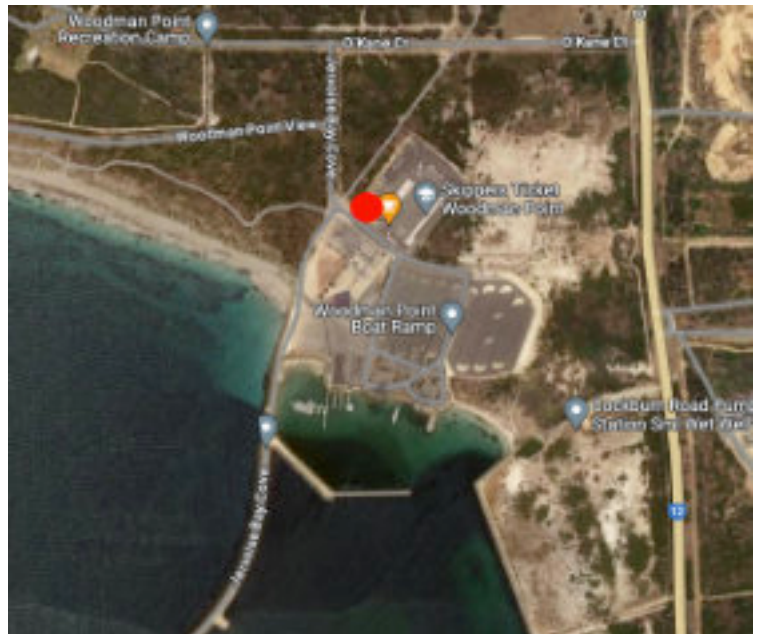
We also operate our subsidiary company West Coast Water Blasting from this location, providing high pressure water blasting equipment and services to support the offshore and onshore marine industries.

Marine Facility and Yard

37 Jervoise Bay Cove,
Munster, 6166

Our marine facility located at the Woodman Point Boating Facility provides us with an important shore side base for the mobilisation of diving projects, allowing us to respond rapidly either by road or sea.

With trailered vessel launched at the Woodman Point ramps, or other suitable ramps close to work sites.



We utilise berthing facilities at SFM in Henderson and Fremantle, including the use of Hard Backed wharf and loading facilities as required. Temporary vessel berthing at DoT facilities is used when appropriate to work scopes.



Quality, Health, Safety and Environment

Smart Subsea implemented its's Quality, Health, Safety and Environmental Management Manual – (QHSE-M) in March 2019, and continues to review and update the manual and supporting documents in line with changing work scopes and applicable legislation.

The QHSE-M describes Smart Subsea's systematic approach to the management of quality, health,safety and environmental matters within the business.

Smart Subsea operates in line with: OHSAS 18001:2007
ISO 14001:2004
ISO 9001:2015



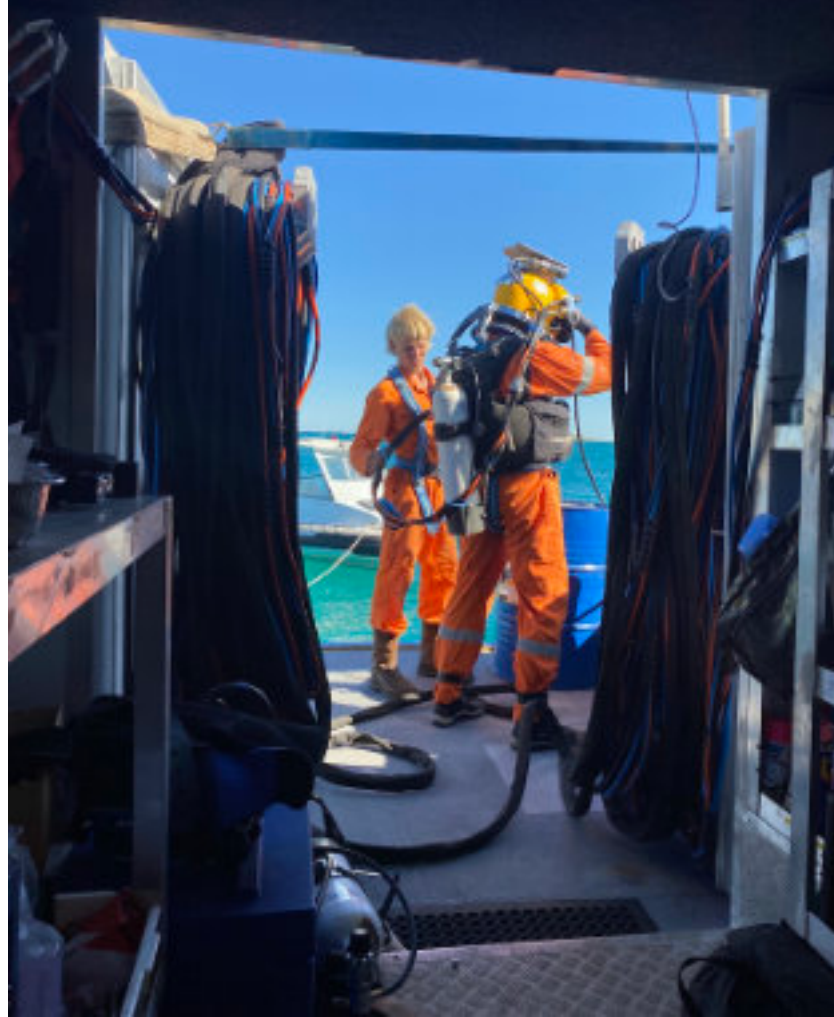
Commercial Diving

Smart Subsea operates under AS/NZS 2299.1 as a commercial diving contractor.

All operations are planned, mobilised, executed and documented in accordance with our Diving Operations Manual and Air Diving and Emergency Procedures Manual.

All works are performed in accordance with applicable legislation, standards and industry best practice.

Our diving personnel are ADAS certified, and typically have a trade background, with experience in the offshore / onshore and ADF diving sectors.



Our diving systems are comprehensive and fully self contained, allowing us to perform safe and efficient diving services with minimal mobilisation and downtime costs.

We operate 24 hours per day, 365 days per year and offer emergency call out services where required. When an emergency occurs, time is often critical to reduce further damage or an environmental disaster.

You can rely on Smart Subsea to respond with the right equipment, the right personnel and the right plan to prevent an emergency from becoming a disaster.



Inspection

Marine assets are under constant attack by the harsh marine environment. As such inspection forms a considerable portion of our works.

Inspection is one of the most important aspects of under-water work. Without accurate inspection and collation of data, engineers cannot correctly assess the maintenance and repairs required to keep structures safe and extend service life.

In many cases removal of marine bio-fouling is required to gain access to components to allow for accurate measurements to be taken. We utilise a range of high pressure water blasting and grit blasting equipment for efficient marine growth removal prior to inspection.

All inspections are performed using HD diver mounted CCTV systems to record all details in real time, and allow for off line viewing.



We provide GVI / CVI visual inspections. Invasive Marine Species (IMS) inspections, photo and video surveys, Under Water Inspection in Lieu of Dry-Docking (UWILD), Ultrasonic Thickness (UT) Measurement, Magnetic Particle Inspection (MPI), Alternating Current Field Magnetism (ACFM), Cathodic Protection measurement (CP), core sampling and many others. Data recording is critical and we utilise cloud servers to back-up data in real time as it is taken. Diver CCTV footage can be viewed remotely allowing engineers to provide feedback to the dive team from remote locations.



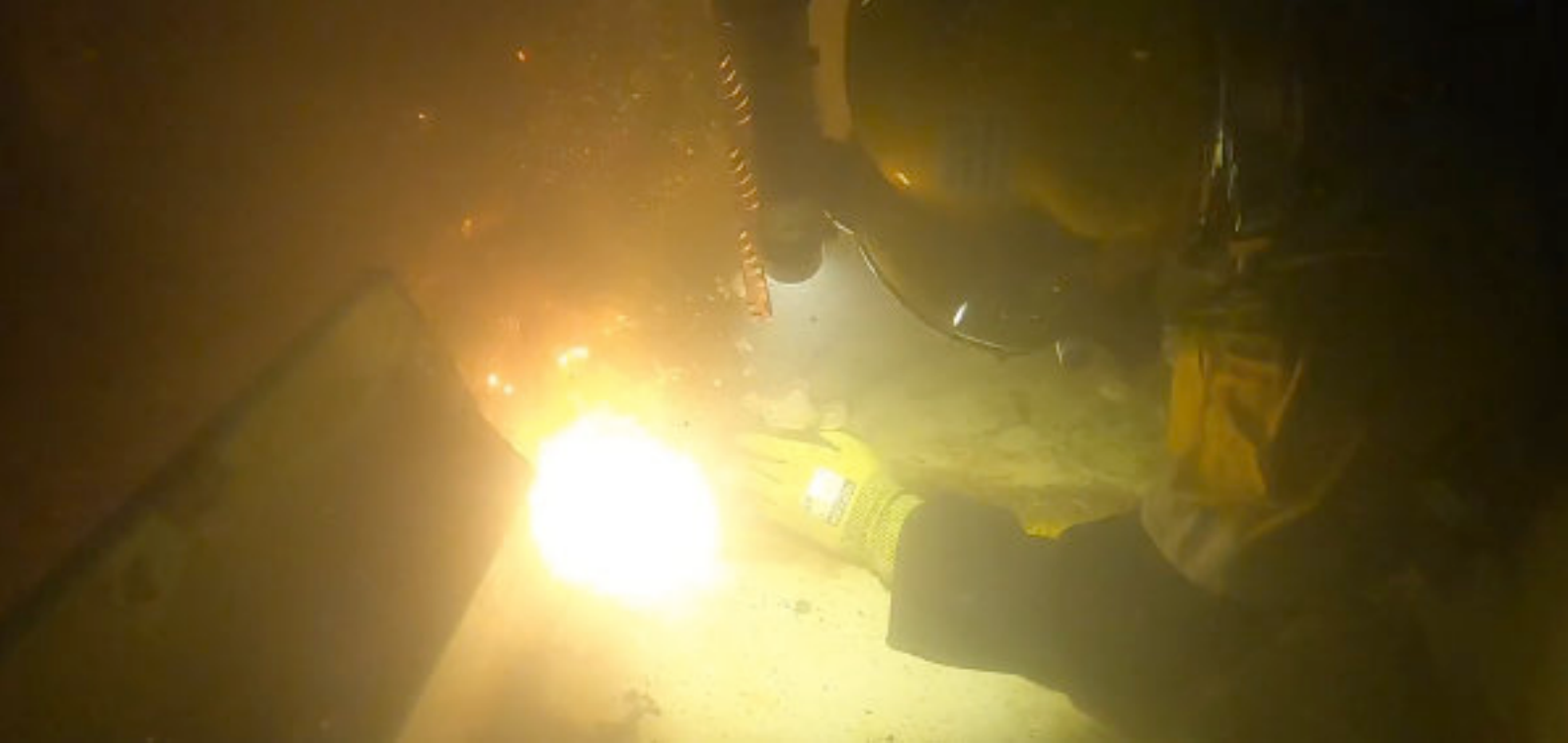
Repairs and Maintenance

We specialise in the repair and maintenance of all types of floating and fixed marine assets, both above and below the water line.

- Marine growth removal
- Corrosion removal and prevention
- Structural weld repairs
- Cathodic protection installation and maintenance
- Doubler plate installation
- Cofferdam installation
- Sheet pile wall repairs and maintenance
- Steel pile encasement
- Grit blasting and surface preparation
- Marine coating application
- Application of marine protection systems
- Timber pile splicing
- Concrete repairs
- Timber pile encapsulation
- Timber structure "end grain" maintenance
- Mooring installation, repair and maintenance
- Navigational aid IRM
- Marine asset preventative maintenance
- Debris removal and environmental clean-up
- Dredging and depth maintenance
- Pipeline free-span rectification
- Epoxy injection

Smart Subsea is a Denso Specialist Sea-Shield Applicator





Underwater Cutting and Welding

Smart Subsea maintains a range of underwater cutting and welding equipment suitable for any task. Our welding plant includes electric and diesel driven welders from 200 to 400 amps, and umbilicals for Broco and wet welding in a range of lengths including 40m, 60m, 100m.

Wet and dry weld procedures, codes and qualifications to DNV / ABS / Lloyds requirements can be performed at our marine facility, all in real world ocean conditions.

We utilise Broco Rankin Ultra-thermic cutting and Hydroweld underwater welding electrodes for all works to ensure consistent and high quality work. We have extensive experience supporting diamond wire cutting, and carry a range of hydraulic cold cut saws and diamond chain saws.

In Q1 2023, Smart Subsea performed the biggest and most complex underwater cutting job in our history, with the task to cut the 196m LOA x 32m beam Royal Australian Navy Oil Tanker "Sirius" into two pieces for removal and disposal. The job included pre cutting inner the inner tank skins in dry conditions, before cutting the hull and sides with Broco and Diamond wire while the ship was sitting on the seabed. The work was completed over an 8 week period, on time, and on budget, with nil incidents.

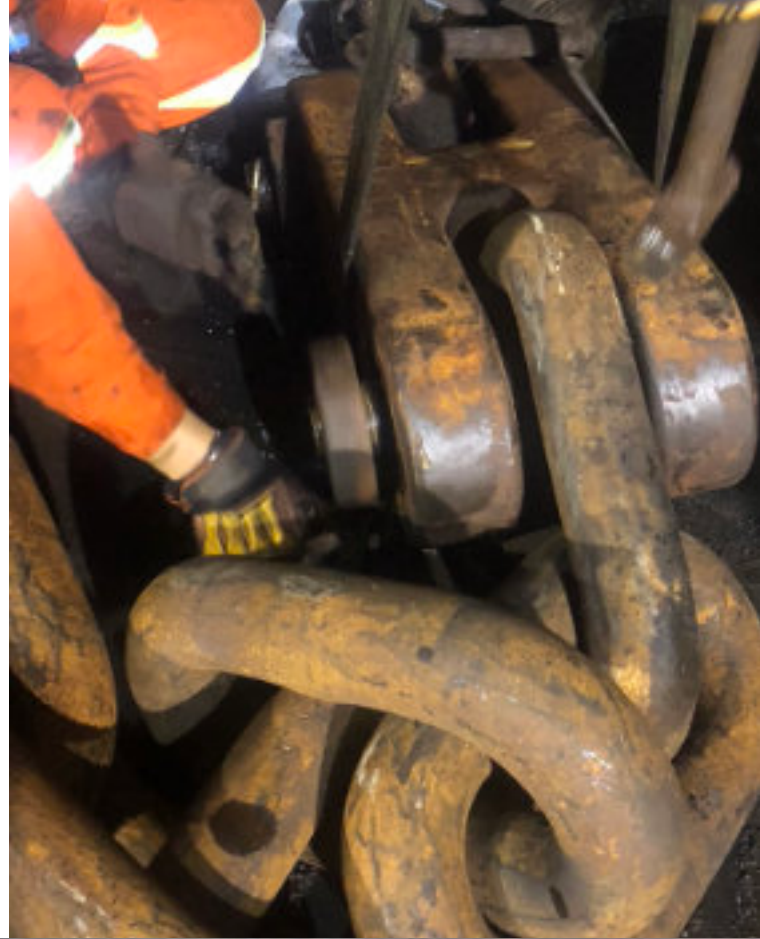


Moorings

We provide a range of mooring support services for commercial and recreational mooring owners. We can perform annual inspections to meet Department of Transport, Parks and Wildlife, and Port Authority requirements.

Smart Subsea can install new mooring systems designed by naval architects to ensure compliance and provide piece of mind. We are able to install Jeyco style moorings using Stingray anchor spreads, and also screw pins installed with subsea drill rig.

Screw in moorings offer significant benefits where correctly installed as the system is suitable for use in environmentally friendly moorings which keep all chain off the seabed to prevent damage to seagrass areas.



Potable Water Diving

We have “Dedicated Potable Water” diving equipment which is used only for use in potable water. The equipment is conspicuously tagged and isolated from equipment used for general diving to prevent contamination risks. Smart Subsea has developed detailed Potable Water diving procedures, which provide guidance for teams working in the potable water environment. We understand the specific requirements and challenges related to diving in potable water in a manner which is safe and compliant.

Vessel Inspections and Maintenance

Vessels require on-going maintenance to ensure reliable and consistent performance. We provide in water vessel services to assist with the upkeep of commercial and recreational vessels.

- AMSA in water surveys for DCVs
- Marine growth removal
- Propeller polishing
- Sea chest and cooling system cleaning and rectification
- Inspection and general repairs
- In-water anode replacement
- Hull inspection and repairs
- UWILD inspections



In Water Hull Cleaning

Strict rules apply regarding in-water hull cleaning, and at present we do not offer in-water hull cleaning.

Marine Salvage

If the worst happens, and your vessel sinks or loses stability, you must respond quickly to preserve your asset and protect the marine environment.

Smart Subsea can respond quickly to assist you, to prevent further damage to your asset and costly environmental impacts. We have the skills, equipment and personnel to make the site safe and recover your asset quickly without further environmental impact.



Smart Subsea can assist with removal of vessel from shallow reefs, recover sunken vessels, improve vessel stability, prepare for towing, right inverted vessels and recover stricken vessels from the water.

We work with naval architects, vessel designers, and tug operators to perform salvage works on a wide range of wrecks and stricken vessels along the West Australian coastline.

Safety always comes first.

Diving Equipment

Smart Subsea owns and maintains a wide range of diving and support equipment.

Standard equipment in all diving systems includes:	Gas Panel:	2 Diver / 3 Supplies Air / Nitrox
	Comms :	Amcom 2 Diver Radio Cross talk diver to diver Private channel deck radios Marine Radios
	CCTV:	High Definition 4 Channel Diver mounted with Light Deck / Site cameras Real time remote viewing
	Umbilicals:	4 Part Fibron Gas / Pneumo / Comms / Video
	Helmets:	Kirby Morgan KM37 / SL17B Kirby Morgan KMB18 / 28
	Gas Supplies:	Minimum 3 HP Breathing Banks LP Breathing Compressor Nitrox EANx as required
	First Aid:	Oxygen Resus Equipment Automatic External Defibrillator AMSA Scale F / Remote Kit

Dive Systems:	Dive Trailer - Road Trailerable Dual Axel 2000KG, Lift off Module
	10' Containerised - Insulated and Air Conditioned
	Fly Away - Ultra Portable 2 x Nelly Mega Bins for Road / Air Freight
	DSV Artisan - 9.6m Aluminium AMSA 2C (2+5) with trailer
	DSV Pagodroma - 11.6m Aluminium AMSA 2C (2+12) with gooseneck trailer
	DSV Dive Punt - 6m Aluminium AMSA 2D (2+4) with trailer

Diving Support Equipment

Breathing Gas:

- 3 x Bauer K180 HP Compressors
- 2 x Bauer Junior HP Portable Compressors
- 2 x Wolf Air LP Breathing Air Compressors



10' Breathing Gas Container c/w:
Bauer K180 HP Compressor
4 x 250L / 400 Bar Storage Banks
400,000L capacity
Cascade cylinder filling system with 6 x
regulated fill whips
Offshore Lift Sling Set

Hyperbaric:

60" Deck Decompression Chamber in
insulated 20' container

48" Deck Decompression Chamber in
insulated 20' container

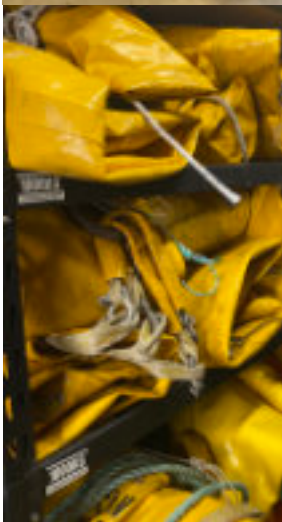
Breathing air LP Chamber Supply
Compressor 80 CFM Diesel Drive

Medical O2 Div16 rental from
Supagas / BOC as required.



Plant and Equipment

Hydraulic Power Packs:	2 x Stanley Petrol Driven 2 x Yanmar Diesel Driven
Hydraulic Tools:	Chainsaws 9" Angle Grinders Drills Impact Driver 1/4" drive Impact Wrench 1" drive Rock Breaker Trash Pump Cut Off Saw
Hydraulic Umbilicals	20m / 30m / 50m 1/2" Supply 3/4 Return
HP Water Jets:	4000 psi 20 L/min 6000 psi 20 L/min 10,000 psi 80 L/min
Grit Blasting:	Torbo L Vapor Blaster Entrainment to HPWJ
Trash Pumps:	Sizes 2"/ 3" / 4" Petrol Drive Particle size up to 20mm
Water Pumps:	200 - 1000 L/min Petrol / Diesel Drive High Head / High Flow
Welding Plant:	200A Mosa Petrol Drive 400A Linclon Diesel Drive 200A Miller Electric 1Ph
Wet Welding Umbilicals:	50m / 100m (50mm ²)
Broco Umbilicals:	30m / 80m 1/2" O2
Air Lifts:	3' / 4" / 6" 10"
Water Dredge:	4" / 6" c/w spoil hoses
Plant Compressors:	200 / 400 CFM Diesel Drive
Lift Bags:	50 - 10,000kg 45 Tonnes in house
Drill Rig:	Subsea aluminium Hydraulic drive
NDT:	Ultrasonic Thickness Cathodic Potential Magnetic Particle ACFM
Positioning:	Stonex s580G Sub 1cm



Vessels

PAGODROMA

Type: Aluminium Monohull
LOA: 11.6m
Main Engines: 2 x Styer 250HP
Propulsion: 2 x Hamilton Jet
Dive System: 2 Diver AS2299.1
built in system
Survey AMSA 2C
2 Crew + 12 Pax
Transport: 10t Goose Neck trailer
(Prime mover required)



DSV Ruby

Type: Aluminium Tri-hull
LOA: 8.0m
Main Engine: Steyr 260HP
Propulsion: 1 x Hamilton Jet
Dive System: 2 Diver AS2299.1
built in system
Survey AMSA 2C
2 Crew + 4 Pax
Transport: 4.5t trailer



DIVE PUNT

Type: Aluminium Monohull
LOA: 6m
Main Engines: 1 x Suzuki DF60HP
Dive System: 2 Diver AS2299.1
portable system
Survey AMSA 2D
2 Crew + 4 Pax
Transport: 2t trailer



Work With Us

We understand that different work scopes often need a different approach when providing services. To cater for different client needs and differing sizes of work scope, we offer diving and marine services under 3 main categories detailed below. We can offer fixed schedule of rates for hourly and day rates, for works in the Metro Area or further afield. We operate throughout Western Australia, and interstate by negotiation.

Short Term Works - Hourly Rate

Typically, short term works around the Swan River / Fremantle Port / Rottnest area can be provided on an hourly rate basis. Other coastal areas within the Metro Area can also be offered at hourly rates but will incur travel costs.

Day Works - Day Rates

Day rate works are typically planned and scheduled for specific tasks and equipment. Equipment can be mobilised at short notice state wide with dedicated Diving Project Plans, ITP's and Safety Planning.

Projects - Day Rate or Lump Sum

Where a detailed or complex scope of work requires a robust subsea solution, we work with our team of consultant engineers, naval architects and project managers to provide a tailored solution. Our team has extensive experience in marine projects globally and are committed to drive projects forward with solution thinking and practical methodologies. Our service levels can be scaled to meet the specific project requirements and budget.

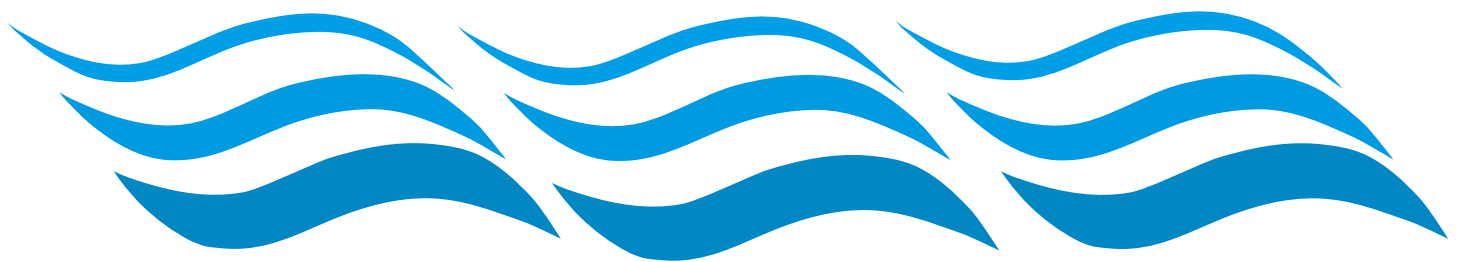
Contact Us:

E-mail: info@smartsubsea.com.au - General Enquiries
 kristal@smartsubsea.com.au - Minor works, moorings, project administration
 david@smartsubsea.com.au - Project works and Quotes

Phone: Office: 08 9303 1484
 Office Mobile: 0409 850 733
 Kristal: 0401 609 802
 David: 0400 123 414



COMMERCIAL DIVING & MARINE SERVICES CAPABILITY STATEMENT



SMART
subsea